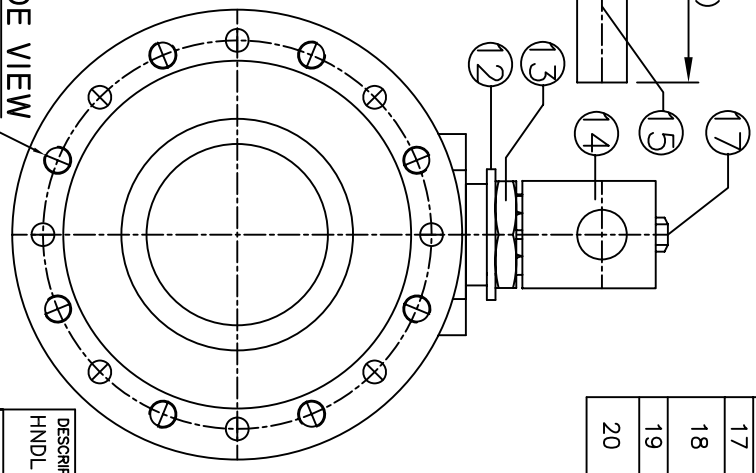
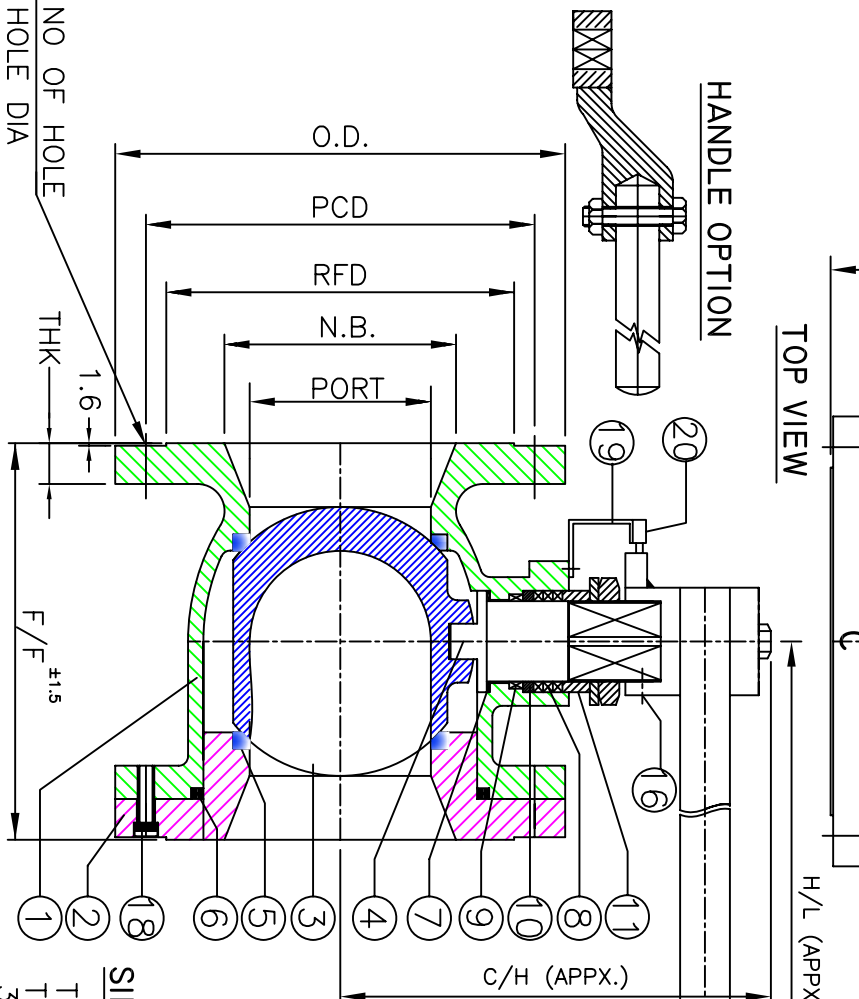
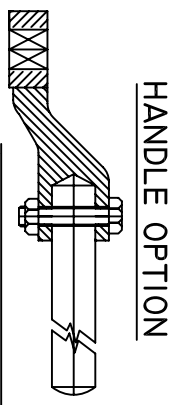
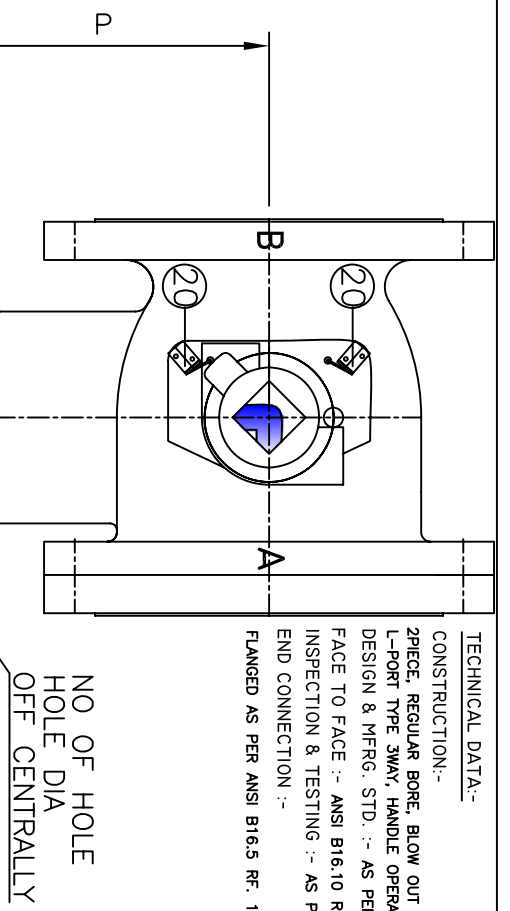


TECHNICAL DATA:-
CONSTRUCTION:-
 2PIECE, REGULAR BORE, BLOW OUT PROOF STEM, SOFT SEATED,
 L-PORT TYPE 3WAY, HANDLE OPERATED BALL VALVE-150 CLASS,
 DESIGN & MFRG. STD. :- AS PER BS-5351
FACE TO FACE :- ANSI B16.10 RF
INSPECTION & TESTING :- AS PER BS-6755 pt-1/BS-5146
END CONNECTION :-
 FLANGED AS PER ANSI B16.5 RF. 150CLSERATED FINISH



PART NO	PART NAME	MATERIAL	QTY.
1	BODY	ASTM A 216 GR.WCB	1
2	INSERT	ASTM A 216 GR.WCB	1
3	L-PORT BALL	ASTM A351 GR.CF8	1
4	STEM	ASI-304	1
5	BALL SEAT	PTFE	2
6	BODY SEAL	PTFE	1
7	STEM WASHER	PTFE	1
8	GLAND PACKING	PTFE	3
9	BEARING	STANDARD	1
10	PACKING COLLAR	ASI-304	1
11	GLAND	ASI-304	1
12	STOPPER	STEEL	1
13	GLAND NUT	STEEL	1
14	HANDLE ADAPTER	M.S.	1
15	HANDLE EXTENSION	M.S.	1
16	HANDLE BOLT	M.S.	1
17	STEM BOLT	M.S.	1
18	ALLEN CAP SCREW	M.S. - 200mm	8
19	LIMIT SWITCHES CLAMP	M.S. - 250mm	12
20	LIMIT SWITCHES	M.S. (AS REQD.)	2

VALVE DIMENSIONS

SIZE	PORT	NB	F/F	C/H	H/L	P
200mm	144	200	292	300	700	250
250mm	187	250	330	350	1100	290

FLANGE DRILLING AS PER ANSI B16.5 150CL.

SIZE	O.D.	THK	RFD	PCD	NO OF HOLE	HOLE DIA
200mm	343	28.5	270.0	298.5	8	22.0
250mm	406	30.0	324.0	362.0	12	25.0

HYDRO TEST - Kg/cm²
BODY - 32
SEAT - 10.5

DESCRIPTION	GENERAL ASS'Y OF	SCALE	PROJECTION	DRN	VIJAY
HNDL OPRTD. 3 WAY L-PORT FLGD.		NTS		DATE	12/1/09
BALL VALVE -150CLASS				CHKD	PJP
VALVE TYPE	RATING	SIZE	STANDARD	ENDS	FLANGED
2PC	150CL.	SHOWN	BS-5351	B16.5 RF	
RB					

UNIMAC CONTROL SYSTEM

D-112, G.M. COMPLEX, NEAR NEW CLOTH MARKET, SARANGPUR, AHMEDABAD. - 380 002

DRAWING NO. BL-3W-L/150/CS/ 200-250